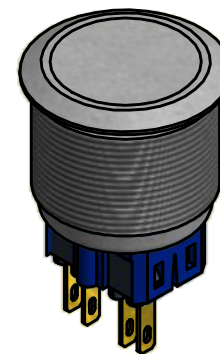
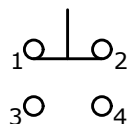


▲ ACTUATOR: STAINLESS STEEL

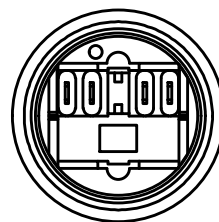
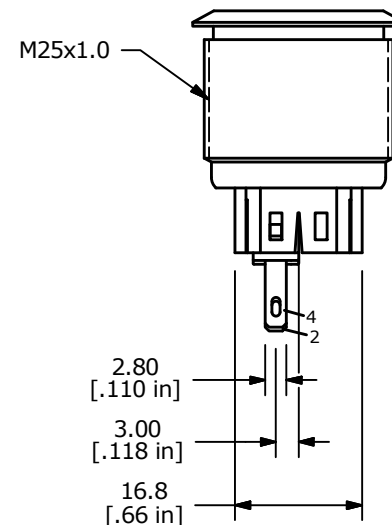
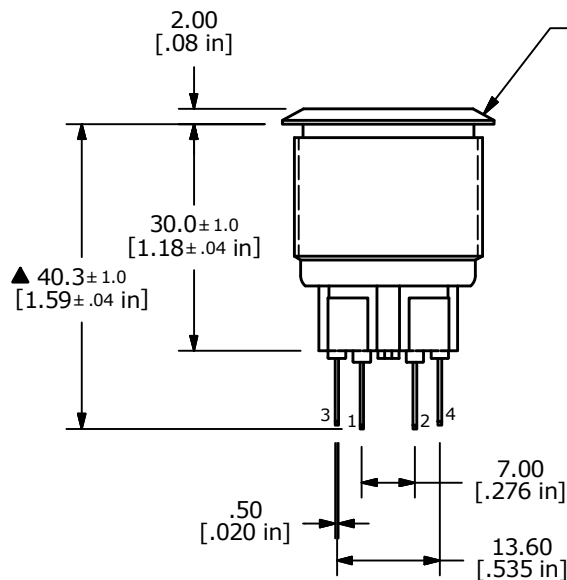


▲ BODY: STAINLESS STEEL

| SWITCH FUNCTION |        |
|-----------------|--------|
| POS. 1          | POS. 2 |
|                 |        |
| 1-2             | 3-4    |



▲ SPDT ON - OFF / OFF - ON CONTACT CONFIGURATION



NOTE:

1. ALL DIMENSIONS IN MM [INCH]
2. GENERAL TOLERANCE: X.X = ± 0.4  
X.XX = ± 0.25
3. TERMINAL NOS. FOR REF. ONLY
- ▲ 4. FUNCTION: SPDT
5. RATING: 2A @ 48VDC
6. ILLUMINATION VOLTAGE: NO ILLUMINATION
7. CONTACT RESISTANCE: 50mΩ MAX. @ 1A 12VDC
8. INSULATION RESISTANCE: 1,000MΩ @ 500VDC
9. DIELECTRIC STRENGTH: 2,000VAC MIN. FOR 1 MINUTE
10. ELECTRICAL LIFE: 50,000 CYCLES
11. OPERATING TEMPERATURE: -20°C TO 70°C
12. INGRESS PROTECTION: IP65
13. SUPPLIED HARDWARE: O-RING AND HEXNUT
14. ▲ DENOTES CRITICAL PARAMETER
15. 2011/65/EU (ROHS) COMPLIANT



|     |        |                                    |          |    |
|-----|--------|------------------------------------|----------|----|
| B   | 22589  | UPDATE PRINT, REMOVE +/- TERMINALS | 11/10/16 | MW |
| A   | 21565  | RELEASE FOR PRODUCTION             | 9/4/14   | rc |
| REV | PCR NO | DESCRIPTION                        | DATE     | BY |

|                 |               |       |                  |       |
|-----------------|---------------|-------|------------------|-------|
| TITLE PV8F2T0SS |               |       |                  |       |
| SCALE 1:1       | DATE 9/4/2014 | DR rc | DWG 52-PV8F2T0SS | REV B |

THE INFORMATION CONTAINED IN THIS DOCUMENT IS PROPRIETARY TO E-SWITCH AND IS NOT TO BE COPIED OR TRANSFERRED